



# LIME SULFUR 60% LIQUID

## Insects & Disease Control

For Citrus, Fruit Trees, Shrubs, Rose and Ornamentals

### CONTROLS



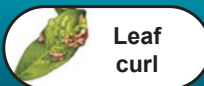
Mites



Scale



Powdery  
Mildew



Leaf  
curl



Rust



**ACTIVE INGREDIENT:** .....60.0%  
**OTHER INGREDIENTS:** .....40.0%  
**TOTAL:** .....100.0%

**LIME SULFUR 60% LIQUID** controls a range of fungal diseases and pests on fruit trees, tomatoes, grapes, roses, other ornamentals and edible garden plants. No withholding period.

**Pest Control Class:** Fungicide, Insecticide, Miticide

**Fungus & Disease Control:** Anthracnose, Brown Rot, Leaf Spot, Peach Leaf Curl, Powdery Mildew, Rust, Scab, Shothol

**Insect Control:** Aphids, Mites, Scale, Thrips

### FIRST AID

#### IF IN EYES:

- Hold eye open and rinse slowly and gently with water for 15-20 minutes.
- Hold eye open and rinse slowly and gently with water for 15-20 minutes.
- Call a poison control center or doctor for treatment advice.

#### IF ON SKIN OR CLOTHING:

- Take off contaminated clothing.
- Rinse skin immediately with plenty of water for 15-20 minutes.
- Call a poison control center or doctor for treatment advice.

#### IF SWALLOWED:

- Call poison control center or doctor immediately for treatment advice.
- Have person drink a glass of water if able to swallow.
- Do not induce vomiting unless told to do so by the poison control center or doctor.
- Do not give anything to an unconscious person.

#### IF INHALED:

- Move person to fresh air.
- If person is not breathing, call an ambulance, then give artificial respiration, preferably mouth-to-mouth, if possible.
- Call a poison control center or doctor for further treatment advice.

Plant	Pest / Disease	Application Rate per 10 Ltrs Treatment Water
Grape Vines	Bud mite, Erinose mite, Rust mite, Vine bunch mite	10ml - 15ml
Citrus	White louse scale, Rust mite, Bud mite, Sooty blotch Citrus rust mite	5ml - 10ml
Roses & Ornamentals	Rust & Powdery mildew Two spotted mite & Scale insects	5ml
Tomatoes & Vegetables	Powdery mildew & Rust Tomato mites & Two spotted mites	6ml - 8ml
Stone Fruit (almonds, apricots, peaches, plums, nectarines)	Black spot, Leaf curl, Bryobia mite, Freckle, Rust, Shot hole, Brown rot (blossom blight), San Jose scale, Frosted scale, Powdery mildew	15ml - 20ml

**How to use :** DO NOT spray when temperatures exceed 32°C or when soil is dry and plants are suffering from moisture stress. DO NOT apply when freezing weather is expected.

DO NOT apply within 14 days of an oil spray.



**STARX PTE LTD** UEN No. : 201526417D

15 Yishun Industrial Street 1 #08-20, Win5, Singapore 768091

Contact Person: Dennis Lim Mobile: +65 9055 1616

Email: sales@starx.com.sg



www.starx.com.sg

Packing Size:

1L